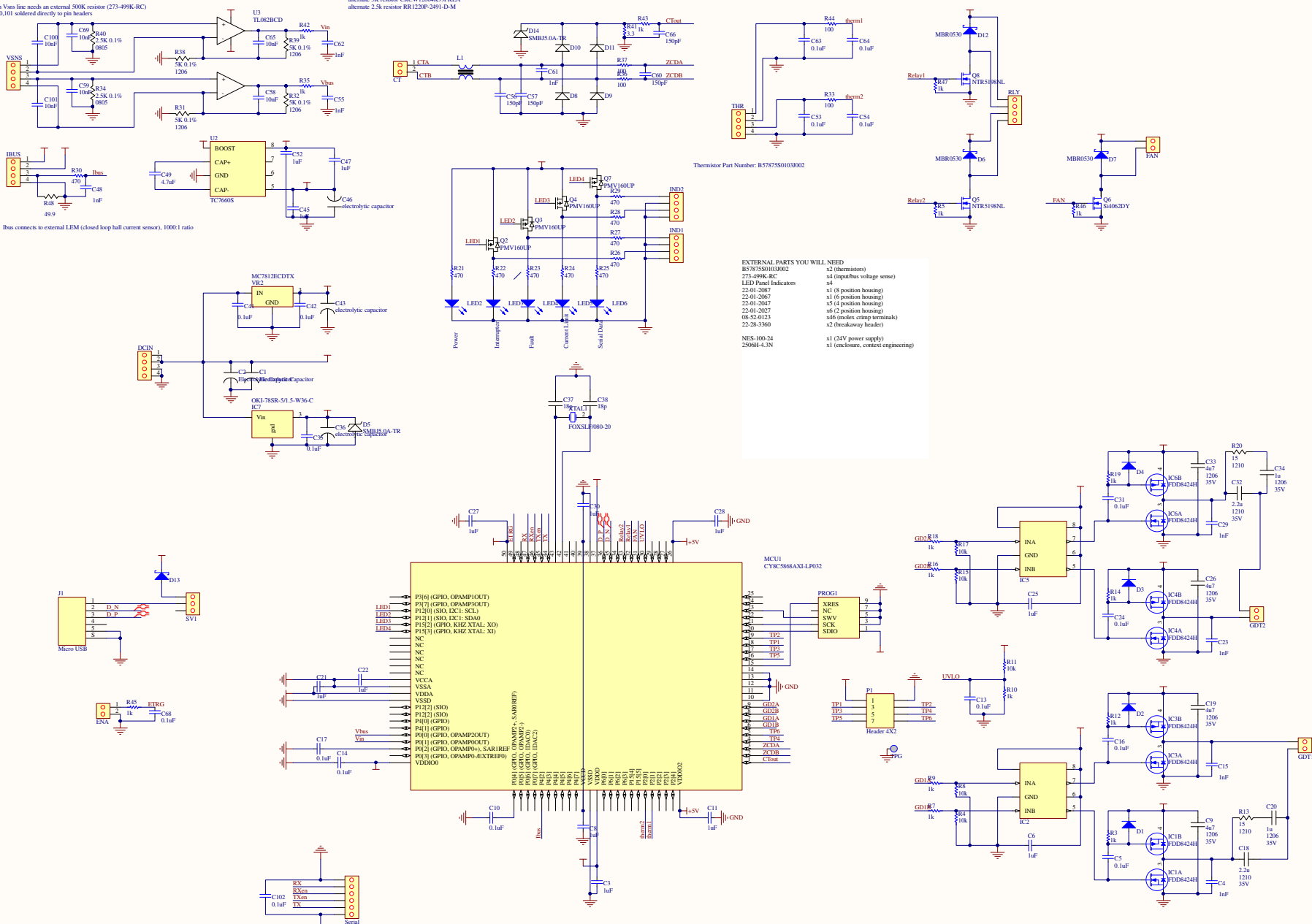


Each Vbus line needs an external 500K resistor (273-499K-RC)
C100,101 soldered directly to pin headers

alternate 5K resistor CRCW12064K99KFEA
alternate 2.5k resistor RR1202P-2491-D-3M



EXTERNAL PARTS YOU WILL NEED
 B57875S0103002 s2 (decimors)
 273-499K-RC s4 (inputbus voltage sense)
 LED Panel Indicators s1 (8 position housing)
 22-01-2087 s1 (6 position housing)
 22-01-2047 s5 (4 position housing)
 22-01-2027 s6 (2 position housing)
 08-52-0123 s46 (modex crimp terminals)
 22-28-3360 s2 (breakaway header)
 NES-100-24 s1 (24V power supply)
 250644-4-3N s1 (enclosure, context engineering)

Title		
Size	Number	Revision
C		
Date:	13.03.2019	Sheet of
File:	C:\GFD\UD3BpsRV2\UD3B_SchDoc	Drawn By: